

## Table of Contents: Click to go to section

[Stage](#)  
[Loading Zone](#)  
[Rigging](#)  
[Orchestra Pit](#)  
[Soft Goods](#)  
[Risers](#)  
[Genie Lift](#)  
[Dressing Rooms](#)  
[Wardrobe](#)  
[Orchestra](#)  
[Backstage Layout](#)  
[Line Set Schedule](#)  
[Sound Specifications and Inventory](#)  
[Consoles](#)  
[Processing](#)  
[Speakers](#)  
[Amplifiers](#)  
[Snakes](#)  
[Plus Data & Video Inputs](#)  
[Communications](#)  
[Lighting Specifications Update](#)  
[Spots](#)  
[Dimmers](#)  
[Dimmer per circuit Control](#)  
[Inventory](#)  
[Front of House Hang](#)  
[Orchestra Equipment \(Shell Risers, Etc.\)](#)  
[Shell](#)  
[Orchestra Inventory](#)  
[Risers](#)

## Stage:

Proscenium opening 29' high x 56'-10" wide  
Stage depth, plaster line to back wall 47'  
Apron edge to plaster line 5'-6"  
Stage width 106'  
Center line to SL wall 55'  
Center line to SR wall 51'

## Loading Zone:

Loading door (stage left) 10' high x 10' wide  
Single Space, ramp down to ground/stage level  
25' push from ramp to stage

## Rigging:

Single purchase counterweight fly system.  
Fly rail off stage right. May be operated at either deck level or 2nd floor mid rail.  
Height to grid 79'-8"  
Maximum high trim (Pipe Travel) 72.5'  
Number of line sets 59  
Arbor capacity 1,200 lbs.  
Length of battens 65'  
Permanent line set assignments: Electric raceway on Line set #3, #17, #31, #44, #57.  
Orchestra clouds on line set #9, #23, #36, #49,

## Orchestra Pit:

Front of pit to apron at center line 8'  
Distance pit extends under apron at center 7'-6"  
Orchestra pit side to side at apron 46'  
Depth of pit from stage 8'

## Soft Goods:

1 - Main Curtain, velour, center split, guillotine  
5 - Borders, black velour, 8' high x 65' wide  
8 - Legs (pairs), black velour, 30' high x 13' wide  
2 - Cycs, white and blue, 30' high x 65' wide  
2 - Scrim, white, tan and black, 30' high x 60' wide  
1 - Blackout, black velour, 30' high x 65' wide

## Risers:

9 Rolling platforms (adjustable 24" - 48")  
3 - 32" Table Platforms  
2 - 24" Table Platform  
9 - 8" - 24" Wooden Platforms  
6 - 16" Table Platforms  
1 - 8" Table Platform  
2 - 32" & 3 - 24" Stair Units

## **Genie Lift:**

36' working height

## **Dressing Rooms:**

Eight (8) 1 - 3 person "Star" rooms.

Two (2) 30 - 40 person "Chorus" rooms.

All dressing rooms have showers, sinks, bathrooms, and makeup mirrors with lights and hanging space for wardrobe.

## **Wardrobe:**

Three (3) Washers & Dryers

Two (2) Jiffy Steamers

Irons and ironing Boards.

## **Orchestra:**

Orchestra Shell "Full Shell" consists of

(10) movable towers

(4)-ceiling units

The ceiling pieces (clouds) are permanently hung on battens.

1 Steinway D. 9' Concert Grand Piano

1 Baldwin 9' Concert Grand Piano

1 Kimball Upright Piano

90 Straight soft back Chairs (black, no armrests)

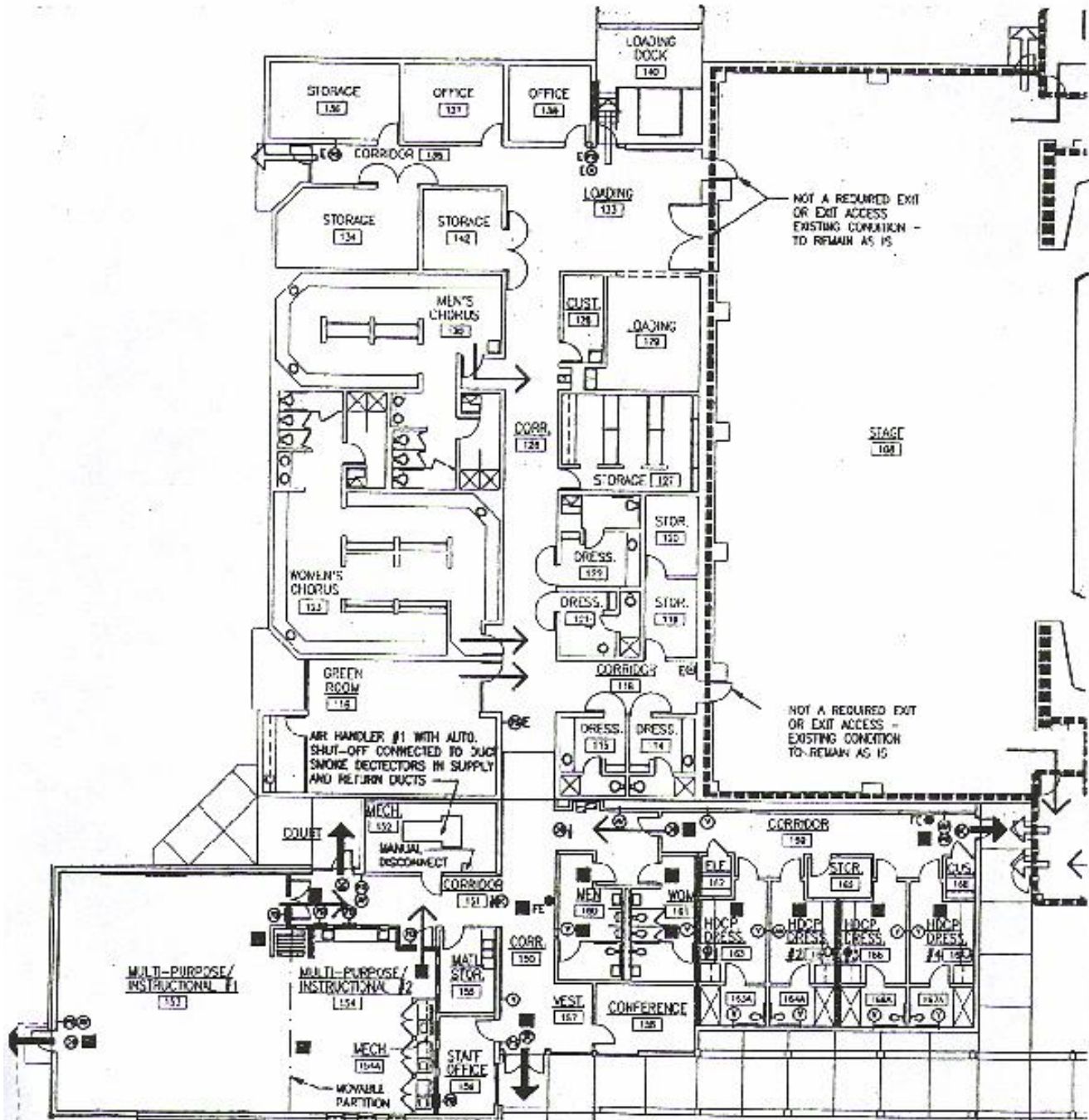
6 Bass stools without backs (black)

98 Music Stands

98 Music Stand Lights

*Actual working inventory may vary.*

# Backstage Layout



# LINE SET SCHEDULE

**\*\* DENOTES PERMANENT LINESET ASSIGNMENTS.**

LINE #	DISTANCE U. S. PLASTER LINE	NORMAL HOUSE HANG	NOTES:
**F.C.	0'-4"	FIRE CURTAIN	IS SUBJECT TO CHANGE.
**H.C.	1' - 2"	HOUSE CURTAIN	CONTACT T.D. FOR MORE INFO.
1	1' - 8"	1ST BORDER	
2	2' - 4"	1ST LEGS	
**3	3' - 0"	1ST ELECTRIC	
3A	3' - 8"		
4	4' - 4"		
5	5' - 0"		
6	5' - 8"		
7	6' - 4"		
8	7' - 0"	2ND LEGS	
**9	7' - 8"	1ST CLOUD	
10	8' - 4"		
11	9' - 0"		
12	9' - 8"		
13	10' - 4"		
14	11' - 0"	2ND BORDER	
15	11' - 8"	3RD LEGS	
16	12' - 4"		
**17	13' - 0"	2ND ELECTRIC	
18	14' -4"		
19	15' - 0"		
20	15' - 8"		
21	16' -4"		
22	17' - 0"	4TH LEGS	
**23	17' -8"	2ND CLOUD	
24	18' - 4"		
25	19' -0"		
26	19' - 8"		
27	20' - 4"		

28	21' - 0"	3RD BORDER	
29	21' - 8"	5TH LEGS	
30	22' - 4"		
**31	23' - 0"	3RD ELECTRIC	
32	24' - 4"		
33	25' - 0"		
34	26' - 4"		
35	27' - 0"	6TH LEGS	
**36	27' - 8"	3RD CLOUD	
37	28' - 4"		
38	29' - 0"		
39	29' - 8"	4TH BORDER	
40	30' - 4"	7TH LEGS	
41	31' - 0"	WHITE SCRIM	
42	31' - 8"	BLACK SCRIM	
43	32' - 4"		
**44	33' - 0"	4TH ELECTRIC	
45	34' - 4"		
46	35' - 0"	FULL BLACK	
47	35' - 8"	WHITE CYC	
48	36' - 4"	BLUE CYC	
**49	37' - 0'	4TH CLOUD	
50	38' - 4"	5TH BORDER	
51	39' - 0"	8TH LEGS	
52	39' - 8"		
53	40' - 4"		
54	41' - 0"		
55	41' - 8"		
56	42' - 4"		
**57	43' - 0"	5TH ELECTRIC	
58	45' - 0"	MOVIE SCREEN	

# Sound Specifications and Inventory

*Update - Nov. 19, 2004*

## Consoles:

Crest X-VCA 48 x 8  
Yamaha-DM-1000 Digital Mixer  
Fender LX-1504 Powered mixer  
(2) Midas – Matrix Mixer – XL-88

## Processing:

(2) Klark – Teknik DN. 360 Stereo EQ  
(1) Yamaha SPX 990 Effects Processor  
(3) DBX-1066 – Compressor/Limiter  
(2) Drawmer MX-40 Punch Gate  
(1) Denon DN T620 CD/Cassette  
(1) Denon DNC-635 Cd player  
(2) Ross Model R-12SP Graphic EQ, 12 band  
(3) Rane GE 60 Eq's (Monitor rig)  
(3) XTA-DP-224  
(1) XTA-DP-226  
(1) XTA-DP-200

## Speakers:

### Center Cluster:

(6) Meyer M-2D  
(9) Left: Meyer M-2D line  
(9) Right: Meyer M-2D Arrays

### Proscenium Towers:

(2) Left: EAW KF-300  
(1) Left: EAW KF-600  
(2) Left: EAW 528-Subs  
(2) Right: EAW KF-300  
(1) Right: EAW KF-600  
(2) Right: EAW 528-Subs  
(1) Loge Fill EAW KF-300  
(2) EAW JF 100 Front Fills  
(4) EAW SM 202H Monitors  
(2) EAW SM 122H Monitors  
(4) Renkus – Heniz SMS 1281 Monitor Wedges

## Amplifiers:

(5) Crest FA 1201 Amps  
(1) Crest FA 2401 Amp  
(1) Crest CA12 Amp  
(2) Crest 7001 Amps

## **Snakes:**

- (4) Klark Teknick DN 1248 Mic Splitter
- (1) 56 Channel Whirlwind Main snake with split

## **Plus Data and Video Inputs:**

- (2) Coax
- (2) Fibre Optic
- (2) Cat-5

**Microphones:** No changes

**Mic Stands:** No changes

**Power:** No changes

## **Communications:**

- Clear Com PL Pro
- M5440- 4 Channel System
- (13) Head Sets
- (8) Belt Pac's plus 2 Wireless Belt Pacs

### **Lighting Specifications Update**

***November 19, 2004***

## **Spots:**

- 2 Strong Exenon Super Troupers 2k

## **Dimmers:**

- ETC – Sensor
- 270 @ 2.4k

## **Dimmer Per Circuit Control:**

- ETC Expression 2X
- 600 Channel
- 24 Submasters with 2 pages

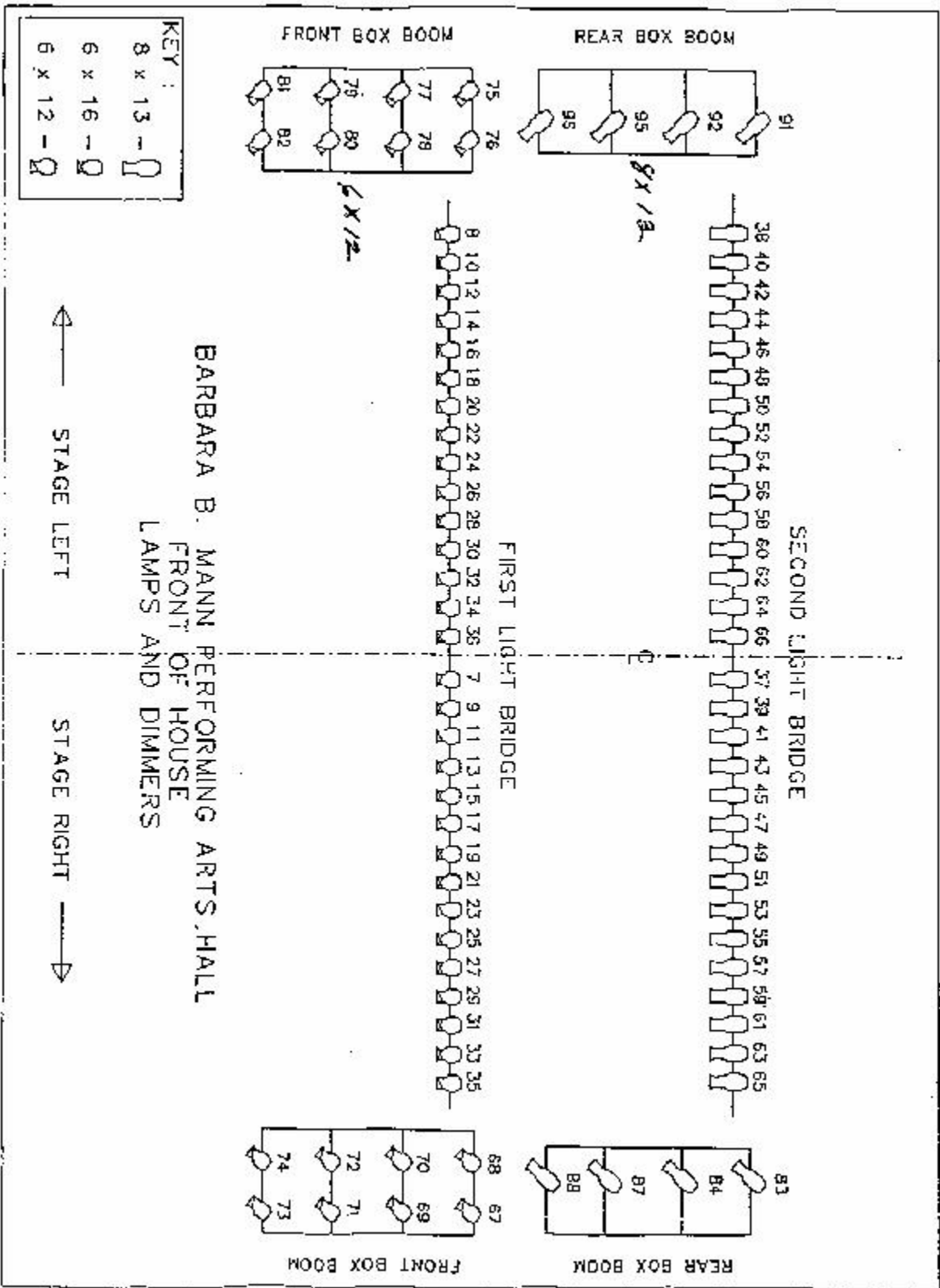
## **Inventory:**

- All instruments are Kliegl + ETC Source 4
- 4.5 x 6.5 Leko 6
- 6x9 Leko 70
- 6x12 Leko 70 (8 permanent FOH)
- ETC Source 4 36°
- ETC Source 4 10°
- 10" Beam projectors 12
- 6" Fresnel 1k9

8" Fresnel 1k 24  
10" Fresnel 1k6  
8' strips, 4 circuit. 24  
(Par 56)  
8" Fresnel 2k 9  
150 Source 4 par cans  
OFFSETS 18 – 1'

*Actual working inventory may vary.*

# Front of House Hang



## **Orchestra Equipment (Shell Risers, Etc.)**

### **Shell:**

The orchestra shell is an expandable enclosure designed to project orchestral or choral sound toward the audience. The shell is erected and struck for shows which require it. A "Full Shell" consists of ten (10) movable towers and four (4) ceiling units. The ceiling pieces are permanently hung on battens, and flipped into a horizontal position when the shell is used. The downstage ends of the shell are contiguous with the sides of the proscenium. Doors in the downstage towers allow entrance and exit for orchestra members, soloists and conductors.

### **Orchestra Inventory:**

90 Straight back chairs, no armrests, black  
6 Bass stools with backs, black  
98 Music stands, black with lights  
10 35' (5 - Gang duplex AC boxes)  
1 Steinway 9' Concert Grand Piano  
1 Baldwin 9' Concert Grand Piano  
1 Kimball Upright Piano (located in the pit)

### **Risers:**

9 Rolling platforms (adjustable 24" - 48")  
3 - 32" Table Platforms  
2 - 24" Table Platform  
9 - 8" - 24" Wooden Platforms  
6 - 16" Table Platforms  
1 - 8" Table Platform  
2 - 32" & 3 - 24" Stair Units

*Actual working inventory may vary.*